

Southwest Calgary Ring Road

Traffic Advisory

August 18, 2017

New Traffic Signals on Highway 8

Locations:

- Eastbound Highway 8 between 69 Street and Sarcee Trail S.W.
- Westbound Highway 8 between Lower Springbank Road and 101 Street S.W.

Impact: Activation of new traffic signals

Reason: Construction haul traffic entering and exiting Highway 8

Start date: August 23, 2017

Completion date: 2021

Work hours:

- The signals are activated by construction haul trucks
- The signals will remain green on Highway 8 outside of construction hours

Speed reduction: N/A

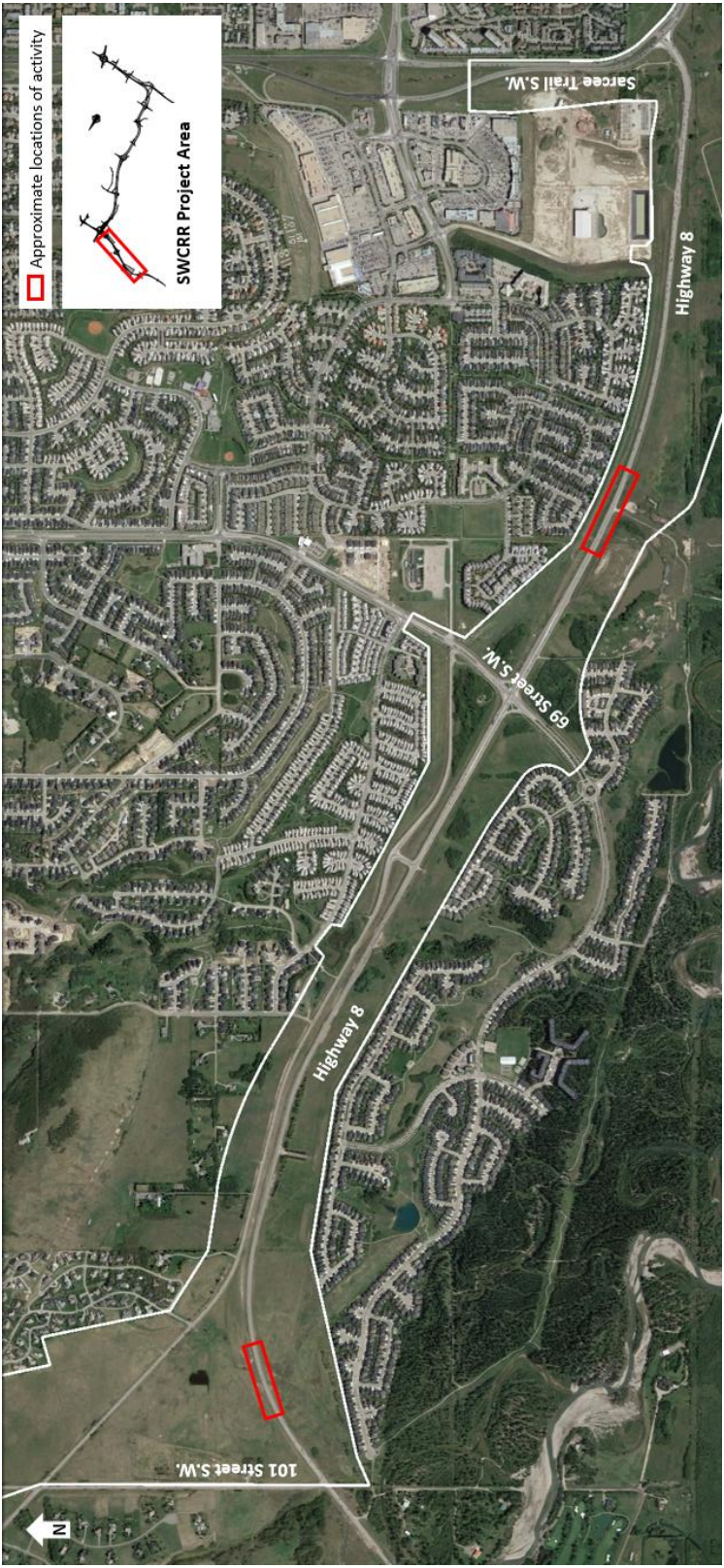
Other information: The project hours for construction of the SWCRR are Monday to Friday from 7:00 a.m. to 10:00 p.m. and Sundays and holidays from 9:00 a.m. to 10:00 p.m.

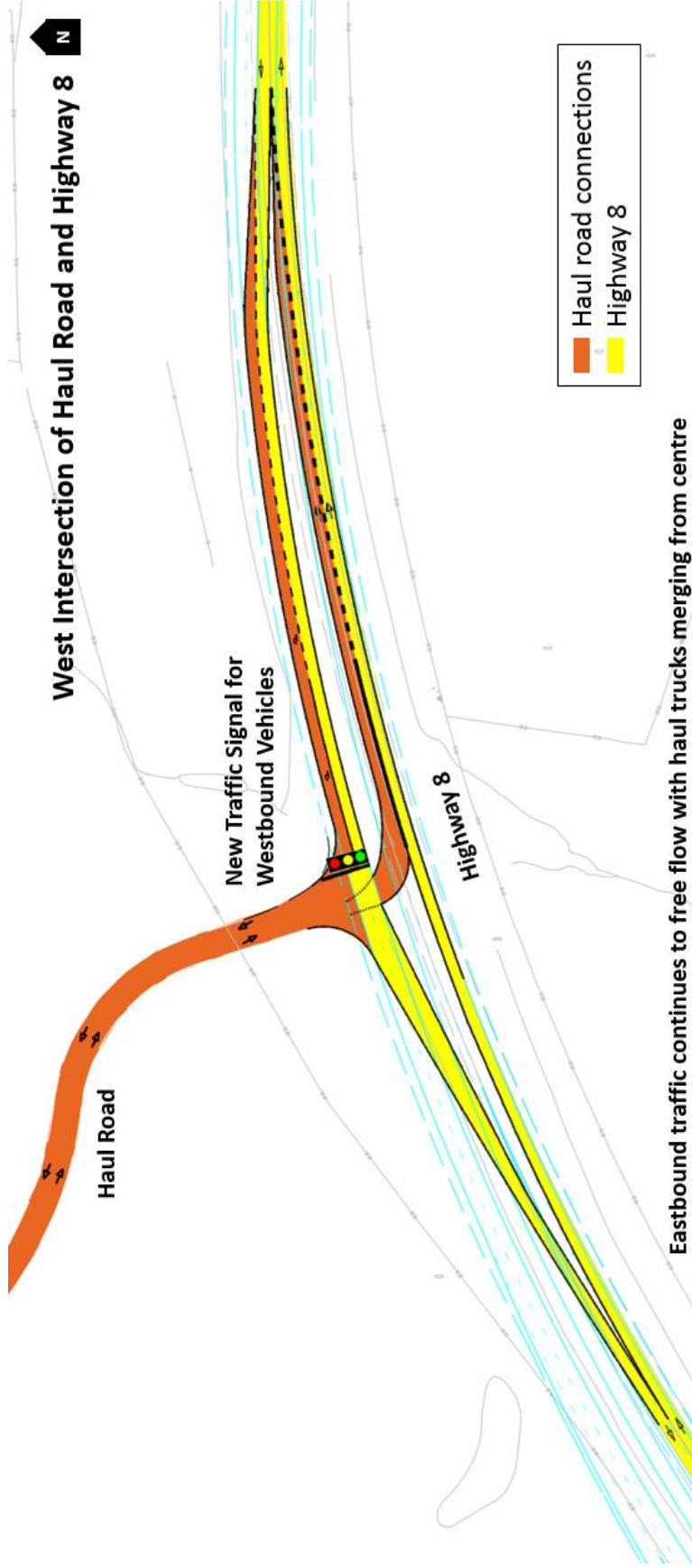
For your safety, please obey all construction signs and traffic control personnel when travelling through the area.

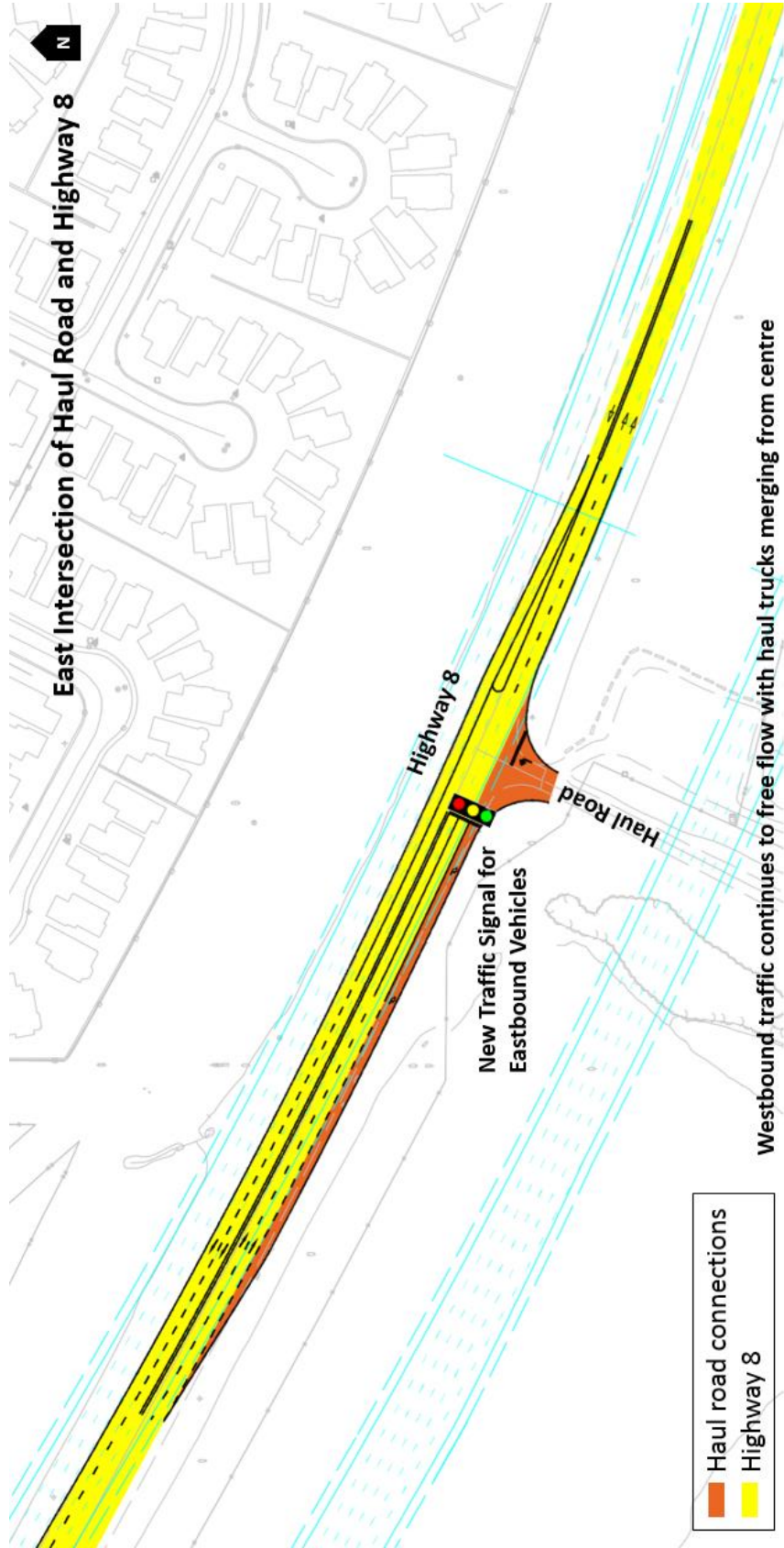
KGL would like to thank you for your cooperation during this period of construction.

403-212-0565
info@SWCRRproject.com
www.SWCRRproject.com









East Intersection of Haul Road and Highway 8



Highway 8

New Traffic Signal for Eastbound Vehicles

Haul Road

Westbound traffic continues to free flow with haul trucks merging from centre

- Haul road connections
- Highway 8